

WARNING

- Operation of this DIRTBIKE by children under the age of 16 Increase of the risk of severe injury or death
- An adult supervision required always.
- Never permit children under age 16 to operate this DIRTBIKE
- Overloading can adversely affect vehicle handling
- Operator use only, passengers prohibited
- This vehicle is designed and manufactured for OFF-ROAD use only.
- Driving on public streets, roads or highways is illegal.
- Always wear helmet and other protective equipment.
- Do not operate this vehicle after consuming Alcohol or Drugs.
- Gasoline is flammable, when refueling. Please shut off engine to avoid sparks and open flame.
- Read owner's manual carefully before riding. Keep owner's manual with vehicle.
- The off road motobike couldn't jumping run.

FOREWORD

Thank you very much optional selection of this OFF ROAD MOTOBIKE

The sport utility vehicle is based on market demand, production of a comprehensive survey. We hope that it will bring you driving pleasure.

Please read Dian Aberdeen before driving the manual, because it will help you understand the sport utility vehicle which the structure, operation and maintenance of basic knowledge, while you keep off-road vehicles are in good condition and safe driving will be very useful.

The non-road vehicle use, and never-in the streets, sidewalks and motor vehicles driving along.

Drivers must be over 16 years of age, driving the need for skilled personnel and adequate comprehension, intelligence and judgment to safely control driving. And accompanied by a guardian.

It will bring unparalleled freedom feelings. In order to achieve the best performance, the vehicle must always reach the correct maintenance. As driver, you should be recognized for your good health, so that you do not fatigue in the best condition you were under control. Medication, drugs, drink, unable to ride, especially alcohol, this will increase the possibility of personal distress.

Liquor very dangerous, even a small amount.

Travel must be good quality bull wearing safety helmets, gloves, put on their boots and put on their long colorful protective clothing. (Both to protect themselves, but also aroused the attention of others)

When traveling to other vehicles and pedestrians who maintain a certain distance

GUIDELINES ON SAFE DRIVING

1, when approaching corners or bends to reduce speed. Upon the completion of turn, may gradually increase the speed.

2, when crossing the vehicles parked in front of, to be very careful. Because the driver of the vehicle may be invisible to you and the door opened, the forward block in your way.

3, Brake Lining may Motorcycle rinsing wetting lose their role, so when cleaning End after walking ago, should check all brake system

Table of Contents

Pay attention to your security..... P1

Safe driving guidelines..... P2

Description..... P5

DIRTBIKES recognition..... P6

Control functions..... P7

Before the operation of inspection..... P11

Rides operate and important points..... P15

Regular maintenance and minor repairs..... P18

Cleaning and storage..... P30

Install process after packaging..... P33

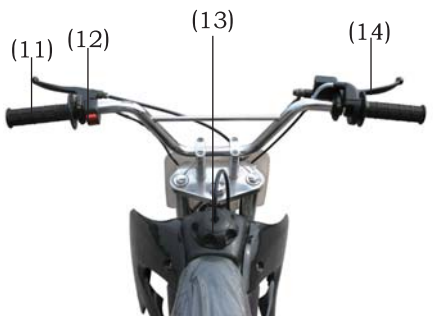
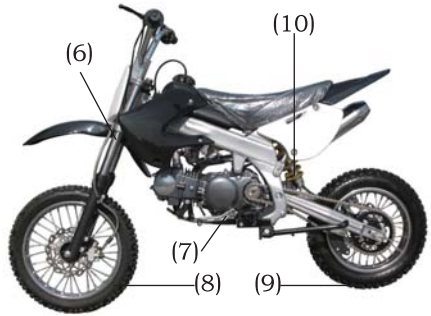
Technical parameters..... P36

Electric diagram..... P37

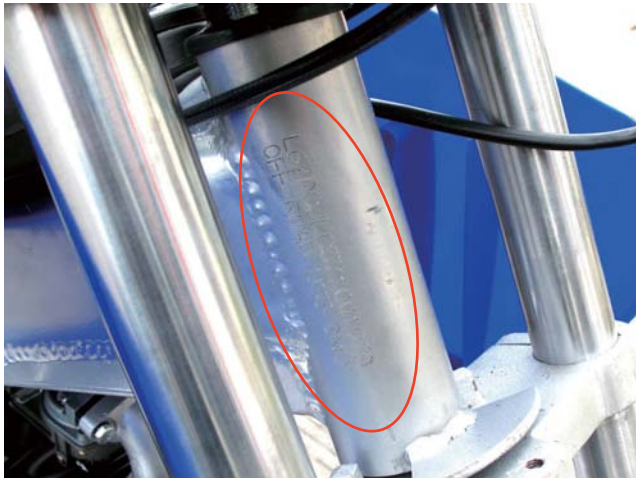


- (1) Muffler
- (2) Seat
- (3) Plastic body
- (4) Handlebar
- (5) Engine

- (6) Front shock absorption
- (7) Gear lever
- (8) Front wheel
- (9) Rear wheel
- (10) Rear shock absorption



- (11) Clutch operate bar
- (12) Switch
- (13) Fuel box
- (14) Front brake operate bar



VIN plate number and product

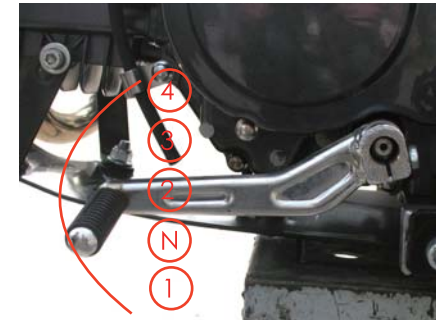


Engine model and serial number



1、 The ignition switch

2、 The shift system:
This car is often used 4 stall international gear-shift system; From the next upward are: 1 stalls - free - 2 files - 3 stalls - 4 stall. Be sure to meet together with the use of the clutch



3、 The front wheel brake handle:
front-wheel brake handle in the right hands. To handle its direction pinch Rafah as a front-wheel brake.

4、Clutch manipulation handle: Clutch manipulation handle in the left hands. To handle its direction pinch grip to clutch torn off and the release of the manipulation handle makes clutch engagement.



5、The rear brake pedal: rear-wheel brake pedal at the right side of the car. Riding next to the brake pedal to the rear brake



6、The fuel Cover: Note: the fuel Cover mouth ventilation can not plug.



7、The fuel valve: the fuel valve in the fuel filter will supply fuel from the fuel tank to the carburetor. Fuel valve has three locations.



Disconnect : fuel will not flow. When the engine is not running, always will be back to handle the position.



Connected : fuel flow carburetor. Lane will usually handle this position at home.

8、Choke: Resistance carburetor throttle in the left arm. Starting cold engine needs a concentration of combustible gas concrete. In such circumstances, will



be impacted throttle arm moving down. After pre-heating the engine will pull rod to the original starting position.

9、Starter: Under starter pedal to the left engine rotational direction, riding with their feet gently under starter until gears meshing. Then under the smooth and powerful ride to Starter.



BEFORE THE INSPECTION OPERATION

Prior to the use of the car, should check the following

| Item | Normal checks |
|------------------------------------------------|------------------------------------------------------------------------------------------------------------------------------------------------------------------------|
| Brake | inspection operation, status and freedom itinerary. If necessary, should be adjusted. Brake Performance confirm whether the good work can be checked out at low speed. |
| accelerator | Check whether the smooth operation of the accelerator. If necessary, should be conducted lubrication / adjustment. |
| Chain-driven | chain of lax inspection and state. If necessary, should be adjusted. |
| Tire / wheel | checks tire pressure, wear, damage and the rate of take-up of the round. |
| Transmission and brake pedal shaft | inspection operation is smooth and, if necessary, should be conducted lubrication. |
| BrakeandClutchmanipulation of the handle shaft | operation of inspection, if necessary, should be conducted lubrication. |
| Parts/ Fasteners | inspection of all parts and fasteners . If necessary, should be carried out Tightening / adjustment. |
| Fuel tank | inspection of the fuel oil / if necessary, should be enough fuel |

Warning: ● If the item prior to use in adverse conditions, should be repaired prior to use.

DRIVERS MUST

Fuel: fuel compartment confirm the adequacy of fuel.

Warning:

● Do not add fuel tank drive. Otherwise, and in the subsequent heating and fuel inflation, the fuel will overflow.

Fuel spillage should be avoided in the hot engine

Recommended fuel: 90 "petrol

Fuel tank capacity:

Total: 2.8 L

Oil :

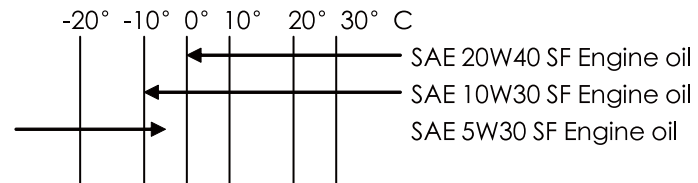
Oil confirm whether oil at the designated place.

1、 the maximum oil level.

2、 the lowest of oil.



Recommended oil



Oil:

Total: 0.9 L

Regular replacement of oil: 0.8 L

Oil Filters replacement: Does deformation, damage.

Tires

1. Tire pressure

Before the cars in operation, should always check and adjust tire pressure. (Tires Barometer)

2. Tire Inspection

Before the cars in operation, should check the tires. If excessive tire wear, to be replaced.

Warning:

● use of the tire wear is dangerous to travel

| | Size | Pressure |
|------------|--------|----------|
| Front tire | 2.5-14 | 32psi |
| Rear tire | 3.0-12 | 32psi |

Important elements operation and rides

Cold Start and engine preheating

Note: This car has used to control the operation of brake motor starter switch. Only in pinch engine brake handle on when to start. We had closed choke before delivery.

1, will be off to the operation by switching positions.

2, the fuel valve turn to: "" position.

3, will be redeployed to the free stalls position

4, press the start switch.

5, will be under starter pedal to the left engine direction of rotation, using footsteps tread gently under starter until gears meshing. Smooth riding and then forced under the engine to start

6, the resistance after heat engine throttle arm downward completely open.

Note: If the engine can not start, please try again

Note: In order to achieve maximum engine life, before moving to engine should always be pre-heated. Not on a Cold-engine acceleration



Hot engine starter

When the engine has been preheated, then you do not need closure resistance throttle.

The engine stalls and accelerated change

1, clenched clutch to clutch handle manipulation of separation.

2, the first advance stalls gear.

3, ease gradually to open the throttle, clutch at the same time gradually relax control handle.

4, when the speed fast enough, we will enter a higher gear stalls stalls, closed throttle, while the rapid manipulation clenched clutch handle. Then promote the second stall gear.

5, open the throttle and clutch control handle will gradually relax

6, repeat the above process, can enter into a higher gear stalls

The commissioning Engine

0-1000 km from the motorcycle mileage during your life is very important for the period. Because the engine is new and in the meantime we must avoid prolonged Full Throttle or any situation that could be the super-engine overheating.

1,0 ~ 150 km:

Operation and avoid prolonged refueling over 1 / 4 throttle position. An hour after the operation should cease engine to cool 5 to 10 minutes. Should often transform the speed and the car stalls

2,150 ~ 500 km:

Operation to avoid refueling over 1 / 2 throttle position. At any time, should not be used Full Throttle operation of this vehicle.

3500 ~ 1000 km:

To avoid refueling over 3 / 4 throttle position.

4,1000 km long and more:

Full throttle operation should be avoided. Avoid low-grade high-speed engine work.

Note: When traveling to the 300 km ~ 500km, the oil must be replaced.

As the car had not been installed Odometer to estimate mileage can only be calculated

Parking

Warning:

● because after running and the exhaust muffler very hot, vehicles should be parked in child care and others not likely to encounter places.



Regular maintenance and minor repairs

Periodic inspection and emphasize peace and lubrication and the car will at the best and most effective work state.

Note: If you are not familiar with this vehicle maintenance services, the work should be COOLSTER maintenance station.

Regular maintenance / lubrication

| Item | Notes | Running --in1000 km or one month | Initial 3000km Or three months | every 3000km Or three months |
|-------------|--------------------------------------------------------------------------------------|----------------------------------------------|-----------------------------------------|---------------------------------------|
| Spark plug | heck their state. When necessary, should be cleaned or replaced | ☆ | ☆ | ☆ |
| Air filter | Cleaning. If necessary, should be replaced. | ☆ | ☆ | ☆ |
| carbutor | Idle checks starting operation. If necessary, should be adjusted | ☆ | ☆ | ☆ |
| Fuel pipe* | Check whether the fuel for cracks or damage there. If necessary, should be replaced. | ☆ | ☆ | ☆ |
| Oil filter* | Check the status. If necessary, should be replaced. | | ☆ | ☆ |

| | | | | |
|----------------------|----------------------------------------------------------------------------------------------|----------------------------------------|---|---|
| Engine oil | The replacement. (In the engine prior to release oil preheating) | 300km and 1000km the first replacement | ☆ | ☆ |
| Engine oil filter* | Cleaning. If necessary, adjust or replace | ☆ | | |
| Tire/wheel | Check tire pressure / balance / Wear state / poor place, if necessary, repair or replacement | | ☆ | ☆ |
| Front wheel bearing* | Bearing components check whether loosening / damaged. If damaged, and should be replaced ** | ☆ | ☆ | ☆ |
| Rear wheel bearing* | Bearing components check whether loosening / damaged. If damaged, and should be replaced. ** | | ☆ | ☆ |
| Chain-dri | Check chain | ☆ | ☆ | ☆ |
| Parts/fastners | Check all the parts and fasteners. Necessary correction should be carried out. | ☆ | ☆ | ☆ |

*: We propose that these items should be COOLSTER repair station for maintenance services.

**: Medium weight wheel bearing grease.

Parts / Fasteners

Prior to the use of the car, should always check with the parts and fasteners tight degrees. We suggest that these projects should be carried out irregular inspections. (I asked, after the demolition of the self-locking nut Please replacement of the self-locking nut, as will the use of safety.)

Correspondence tables fastening torque

| Screw size | Fightenin g torque N · M | Standard torque N · M | Screw size | Fightening torque N · M | Standard torque N · M |
|------------|-----------------------------|--------------------------|------------|----------------------------|--------------------------|
| M5 | 4.5-6.0 | 5 | M10 | 37-79 | 60 |
| M6 | 8-12 | 9 | M12 | 73-115 | 99 |
| M8 | 16-26 | 23 | M14 | 146-205 | 180 |

Oil

1, the measurement of oil
A. Engine preheater minutes.
B. When the engine stopped operating, hold on a few minutes later, the oil Cypriots will be removed after the oil-observation.

C. The oil should be located at the highest and the lowest among the oil-marker. If the oil level low, should be enough oil to rise to the oil-appropriate.

2, oil and oil filter replacement of the replacement. (Photo)
A. Engine preheater minutes.

B engine will stop. In an engine oil was placed underneath.

C. discard release oil bolts, release oil. Put oil may moderate shaking body to be inside the engine from impurities.

D. installed release oil bolts, and then full of engine oil. Tightening oil Cypriots.

I. Starting engine and a few minutes to preheat. Preheat should check whether there are oil spills. If it appears that an oil spill, should immediately stop engine and check reasons.

3, the replacement of oil in the second about a month or so to clean oil filters



Warning:

● Do not join any chemical additives. Also lubricating oil clutch, clutch slipping and additives will.

Note: In the replacement of oil, must be in accordance with the following method to check oil pressure.

- 1, removed the cylinder covered with oil release bolts.
- 2, starter motors, and keep them idle until the oil outflow from caving hole. If no one minute after the oil outflow or unusual phenomenon, should stop the engine running to the nearest COOLSTER dealer or repair shop for repair.
- 3, after the test should be tightened release oil bolts.

Carburetor adjustment

Carburetor is a key part of the car, the need for fine adjustment. Most adjustments should be entrusted with the expertise and experience COOLSTER dealers or repair shops

Idle adjustment

1. Connect speed LAU
2. Speed Festival through idle screw on the carburetor, idling provisions set to rotate within the raise into the engine speed, to a decrease in engine speed from

Standard Idle:

1500 ± 150 to / min



Screw idling



Screw release oil

Air Filters

Filters should carry out regular checks, cleaning. If necessary, replaced.

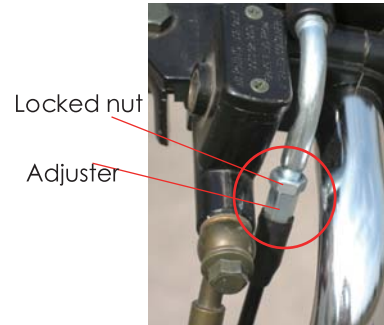
The throttle cable adjustment

Note: In adjusting the throttle cable free trip before, we must adjust engine idling.

Through rotational regulator to adjust throttle cable, it can lead to throttle the right hand free Filed doors itinerary.

Free trip:
2 to 5 mm

- 1, loosen lock nut.
- 2, Hin into a regulator or until attaining the free trip.
- 3, tighten the lock nut.

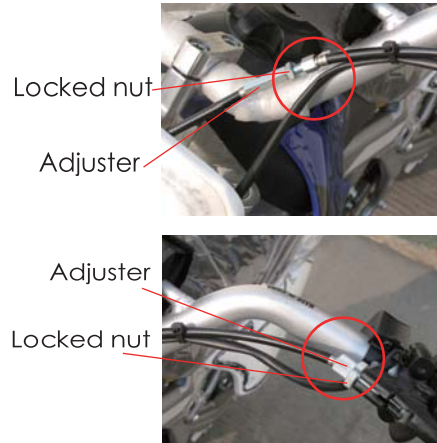


Clutch cable adjustment

Through rotational regulator to adjust the clutch cable, it can reach the correct manual clutch free trip.

- 1, loosen lock nut.
- 2, diverted or transferred from the regulator, until they reach the correct free trip.
- 3, tighten the lock nut.

Free trip:
2 to 5 mm



Spark Plug inspection

Model: NGK

Clearance: 0.6 ~ 0.7 mm

Torque: 12.5 N • M

The spark plug is an important engine parts, and easy to check. The state can spark plug of the engine that state.

The normal riding in the car, in the center electrode white ceramic insulators around the ideal color is appropriate. Brown. Do not attempt to self-diagnosis of any fault, and should be sent to COOLSTER the car dealer or repair shop. You must be regularly removed and examined spark plugs, as heat and carbon deposition will spark plugs slowly breakdown and ablation. If the electrode ablation too seriously, we must use the provisions of its spark plugs will be replaced.

Before installing the spark plug, the regulation should be used to measure the thickness electrode gap, if necessary, will be adjusted to space requirements value.

Note: If you have not installed when the spark plug torque wrench, torque correct estimation method is tightening its hand to exceed 1 / 4 to 1 / 2 laps

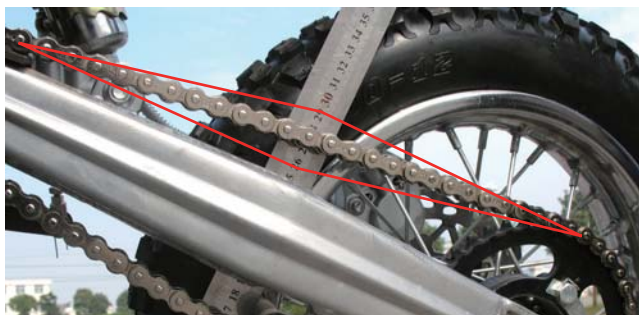
0.6-0.7mm



Driving chain relaxation of inspection

Note: rotating wheel several times to identify the most compact location of the chain. When the chain in the most compact position, check or adjust chain relaxation.

The normal relaxation of 15 to 25 mm. If relaxation beyond 25 mm should be adjusted



The drive chain adjustment

- 1、loosen the rear brake adjuster.
- 2、loosen after the axle nut
- 3、For tensioning chain, the chain by rotating clockwise direction on the M6 regulator anti-retreat-pine nut . If required relax chain, according to the direction of rotation 10,000 anti-chain adjuster on the M6 and the prevention of anti-retreat Pine Nut . Forward and rear axle into. The same should be fully rotate the regulator of the M6 and the prevention of anti-retreat Pine Nut , Pian would maintain coaxial.

4、 in the adjustment, must tighten all loosen the parts.

5、 in the adjustment, the chain must tighten regulation of the fixed screws and nuts.

Note: chain relaxation too small engines and other key will zero overloading. Relaxation should be made to maintain the prescribed limit scope



The drive chain lubrication

The chain includes many mutual operation of the parts. If the chain would not carry out proper maintenance, the chain that will soon wear. Therefore, we must carry out regular maintenance of the chain. In this dusty region riding car, the more maintenance is necessary.

1, may use any brands of spray-chain lubricant. First, the use of brush or cloth to remove all the dirt and mud masonry. Then two rows of siding between the center and all spraying lubricant on the roller.

2, For cleaning chain, will be removed from the board, the Baptist in solution should as far as possible removal of masonry scale. The chain removed from the solution and make it dry. The chain lubrication will be carried out immediately to prevent corrosion.



The shock absorber adjustment

The shock absorber with spring pre-load regulator. Click the following spring pre-load adjustment method.

According to the direction of rotation “a” regulator in order to increase spring pre-load. (Tune hardware)

According to the direction of rotation regulator “b” decreased pre-loaded. (Tune soft)



Adjuster

CLEANING

1、In order to keep the car clean and protect the surface appearance of the painting, electroplating, should regularly or irregularly its cleansing. When cleaning, use of external surface water irrigation, rush soil. Use a soft cloth or sponge dip cleaning liquid bubble gently cleans the outer surface, to avoid residual gravel surface and paint scratches electroplating layer. Finally reuse water for irrigation.

2、Attention:

● washing, to avoid using the high-pressure water erosion under parts:

(1) off switch;

(2) The exhaust pipe muffler exports;

(3) air filter inlet

After the car wash thoroughly dry, and then start engine, running for a few minutes. Finally repeatedly braking performance brake inspection and adjustment until braking performance standards so far.

Special Note: in the hot engine, the first will not wash. Engine room temperature with the same question again when cleaning. If water pressure caused the brake, the former damping seals and electrical parts Loss.

STORAGE

If the park does not need to use a long time, in order to maintain a good state of the car, you please address the following methods:

1)、 select the right parking place. The location should have security, ventilation, moisture-proof, anti-freezing conditions.

2)、 for engine lubricants.

3)、 in the fuel tank and the carburetor fuel release all net, oil stored properly. Note: Do not overlook the release carburetor net residual oil. Otherwise, no need for a long time, the surface of the plastic fuel carburetor of holes to plug, re-use of the car when trouble.

Warning: volatile fuel in the fuel emissions, the engine must be stopped operating in the ventilation good place to prohibit smoking ban on the use of open flame and sparks objects.

4)、 In order to prevent cylinder rust, we should adopt the following measures:

Remove spark plugs, A Spoonful (15 ~ 20 m) from the clean engine oil into the cylinder spark plug hole with a piece of cloth spark plug holes starter motors, mobile number to Detroit from top to bottom so that the oil in the cylinder wall are cloth. Finally, the spark plugs and spark plug cap installed.

5)、 Battery demolition down, stored in antifreeze, sunscreen, and other items collision difficult places. Every

two weeks an additional charge.

6) wash and dry your car, paint waxing to all, to all chrome painted on the surface antirust oil.

7) to inflatable tires, tire pressure up to the required standard air pressure. After stopping the car will be good, with shelves or pieces of wood and other wheels will be boosted so that the wheel does not contact with the ground.

8) will cover the car to prevent the dust down. Do not use plastic sheeting to things such as gas-tight coverage, as there are for the mechanical vapor corrosion

AFTER THE RE-USE STORAGE

1) Remove the guards cover the car, clean the body. If placed more than four months, the need for replacement of engine oil.

2) add fuel to the fuel tank.

3) all of the pre-inspection lane.

4) before traveling during the next regular session, a choice open, pedestrian areas for less performance inspection, confirmed Properties normal traffic could resume normal

DEVANNING ASSEMBLY(1)



1、Disassembled packaging belt



2、Take out carton



3、Disassembled metal frame



4、Take out plastic



5、Install handlebar



6、Install front fender

DEVANNING ASSEMBLY (2)



7、Install front decorator



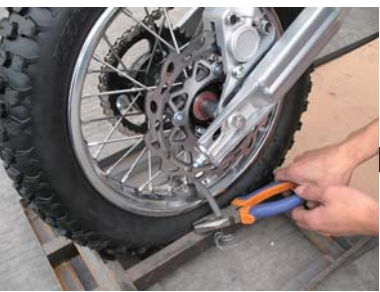
8、loosen front shock absorber fixer



9、Install front wheel



10、Install rear shocker



11、Cut off fixed wire



12、Install plastic body

DEVANNING ASSEMBLY (3)



13、Install pedal



14、Finished installation

Correspondence tables fastening torque

| Screw size | Fightenin g torque N · M | Standard torque N · M | Screw size | Fightening torque N · M | Standard torque N · M |
|------------|-----------------------------|--------------------------|------------|----------------------------|--------------------------|
| M5 | 4.5-6.0 | 5 | M10 | 37-79 | 60 |
| M6 | 8-12 | 9 | M12 | 73-115 | 99 |
| M8 | 16-26 | 23 | M14 | 146-205 | 180 |

SPECIFICATIONS

I、NO: QG-214-FC

II、The main specs of size:

2. 1、Model dimensions: 1600x750x1080mm

2. 2、wheelbase: 1100mm

2. 3、ground clearance: 230mm

2. 4、front gradient: 26°

2. 5、minimum turning radius: 4500±200mm

2. 6、steering angle: Left\ Right 30±2°

2. 7、dry weight : 75kg Gross weight: 96Kg

2. 8、seat height: 600MM

III、main quality specs

3. 1、max speed(km/h): 67

IV、engine specs

4. 1、engine no: 1P52FMH/1P52FMI

4. 2、engine type: single cylinder,4-stroke, compulsory air cooled

4. 3、110cc bore*stroke(mm): 52.4X49.5 120cc bore*stroke(mm): 52.4X57

4. 4、compression ratio: 9.0 : 1

4. 5、110cc max power kw/(r/min): 4.36/7500±500(Kw/r/min)

120cc max power kw/(r/min): 4.72/7500±500(Kw/r/min)

4. 6、110cc max torque N•m/(r/min): 6.18/5500±500(N.m/r/min)

120cc max torque N•m/(r/min): 7.82/5500±500(N.m/r/min)

4. 7、the mini speed unlade stability: 1500±150 r/min

4. 8、gas type: ≥90#

4. 9、engine oil capacity : 900 ml

4. 10、lubrication system: pressure spatter

4. 11、starting system: foot

4. 12、Ignition: CDI

4. 13、clutch type: Manual clutch

4. 14、carburator no: PZ22

4. 15、spark plug no: D7TC

4. 16、spark plug space: 0.6~0.7

4. 17、fuel tank capacity: 2.8L

4. 18、engine displacement: 107CC

V、shock absorber type

5. 1 shock absorber front : spring

5. 2 shock absorber rear : hydraulic spring

VI、tire specs pressure

6. 1 Hubs front: 1.40X14

6. 2 Hubs rear: 1.85X12

6. 3 tires front: 2.50-14 32psi

6. 4 tires rear: 3.0-12 32psi

VII、brake system

7. 1 brake front: hub brake/hand manipulating patterns

7. 2 brake rear: hub brake/foot manipulating patterns

VIII、electric equipment

8. 1 generator: non-contact outside the rotor flywheel

ELECTRIC DIAGRAM

